

CONSAI AGRO OS

The Infrastructure Layer for the Future of
Agriculture, AI, Trade & Economic Ecosystems.

Highly Confidential | Strategic Investment Memorandum

The Digital Orchestration Layer for a Trillion-Dollar Ecosystem.

CONSAI Agro OS is engineered not as a software tool, but as a Global Market Infrastructure Layer. It is the digital orchestration mechanism required to transition agriculture from a series of disconnected analog events into a high-liquidity, structured digital economy.



Economic Result

A frictionless, scalable digital economy optimized from soil to settlement.



Systemic Reach

Multi-role integration connecting farmers, buyers, investors, and governments.



Revenue Scalability

Five interlocking revenue engines driven by AI and embedded fintech.

The Analog Disconnect in a Fragmented Global Economy

Farmers

Lack access to critical equipment, structured offers, and flexible financing.

Investors & Crowdfunding

Lack verified agricultural opportunities and transparent risk assessment.

Machinery Providers

Cannot consistently find qualified projects or buyers; inventory sits idle.

Governments & Institutions

Lack real-time visibility into regional agricultural demand to deploy subsidies.



Why an 'Operating System' Defeats a 'Platform'.



CONSAI does not store relationships; it creates, qualifies, and algorithmically converts them into transactions.

The Multi-Role Orchestration Ecosystem

We go beyond connecting buyers and sellers; we orchestrate the entire agricultural value chain.

Supply Data:

Predictive AI Yield
Forecasting

Capital Flow:

Cross-border leasing
& crowdfunding

Commercial Execution:

High-value marketplace
transactions

Fulfillment: Embedded
mobile money settlements
& routed logistics

The 6-Layer Operating System Architecture.

Layer 6: Marketplace & Transaction Layer
(Commercial Execution).

Layer 5: Agriculture Operations & Management
(SaaS Operational Loop).

Layer 4: Financial & Crowdfunding Engine
(Capital Flow).

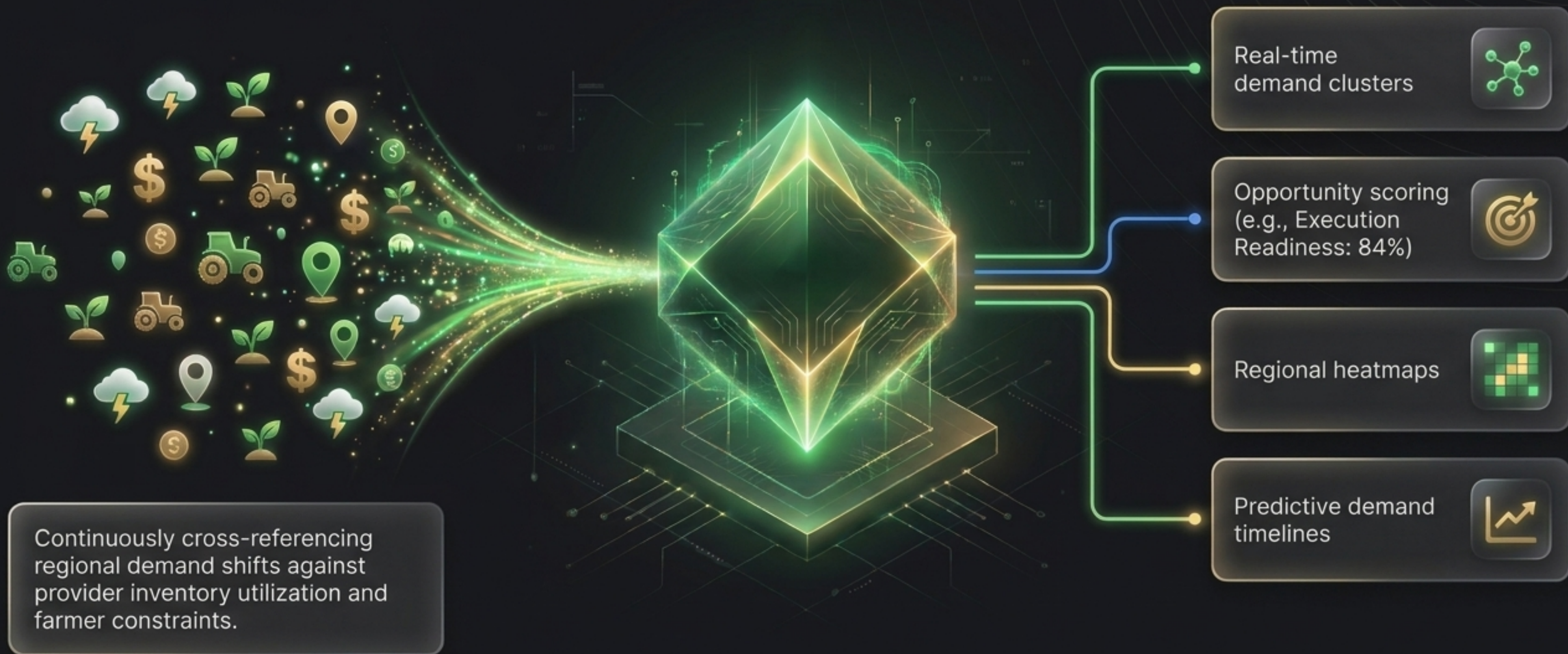
Layer 3: AI Lead Generation & Project Engine
(Action & Execution).

Layer 2: AI Demand Detection &
Opportunity Engine (Intelligence).

Layer 1: Centralized Data Layer
(The Moat & Foundation).



The AI Demand Detection Engine.



Algorithmic Trade Execution & Asset Activation.



Demand RFQs instantly pair with Supplier Products based on AI ranking.

The ConsAgro Trust Index & Immutable Ledger

Structured record integrity and controlled transaction architecture. Institutional-grade audit trails, avoiding speculative hype.



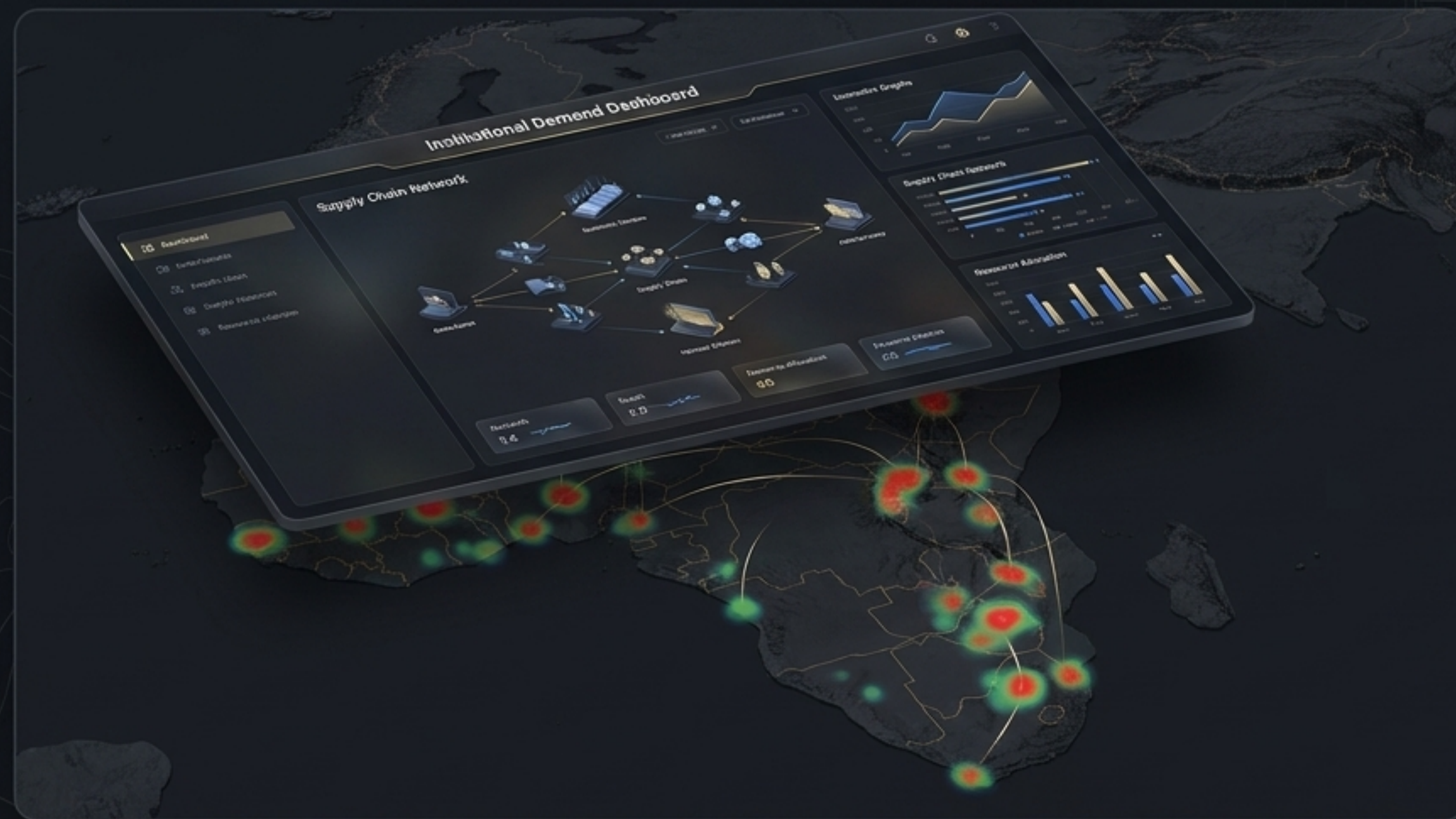
Financial Impact: Trust Index scores are snapshotted into every submitted offer—creating a timestamped record of reliability that unlocks institutional capital.

The Multi-Sided Value Equation.

	Input (The Give)	Output (The Get)
Farmers	Farm data & project needs.	Matched providers, flexible financing, leasing options.
Machinery Providers	Inventory & service specs.	AI-generated leads, verified projects, optimized asset utilization.
Investors	Capital & investment criteria.	Verified agricultural projects, structured funding rounds, analyzed risk.
Governments	Program parameters.	Aggregated data, regional demand monitoring, optimized subsidies.

Sovereign Infrastructure & B2G Licensing

Providing governments and institutions with a central agricultural intelligence command layer for food security.



Key Enterprise Capabilities

National agricultural infrastructure digitization.

Real-time machinery gap & demand cluster mapping.

White-label country ecosystems & economic intelligence.

Optimized, trackable subsidy deployment.

Monetization: Annual government licensing and premium enterprise analytics.

The SaaS-to-Transaction Flywheel

Operations SaaS

Equipment tracking, crop lifecycles, and yield analytics.

Data Feed

Operational tracking continuously feeds real-time telemetry back into the AI.

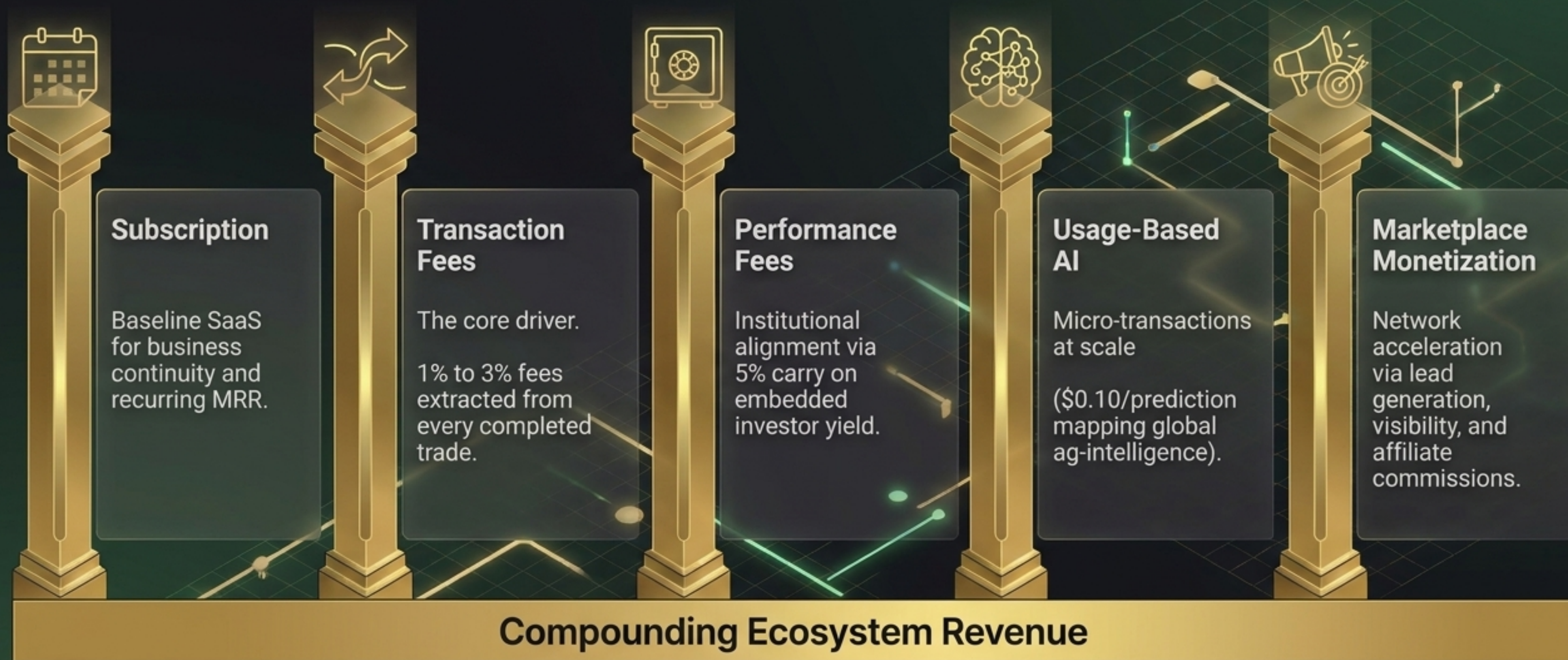
Retention

Completed transactions automatically populate the user's SaaS module for ongoing management.

Marketplace Execution

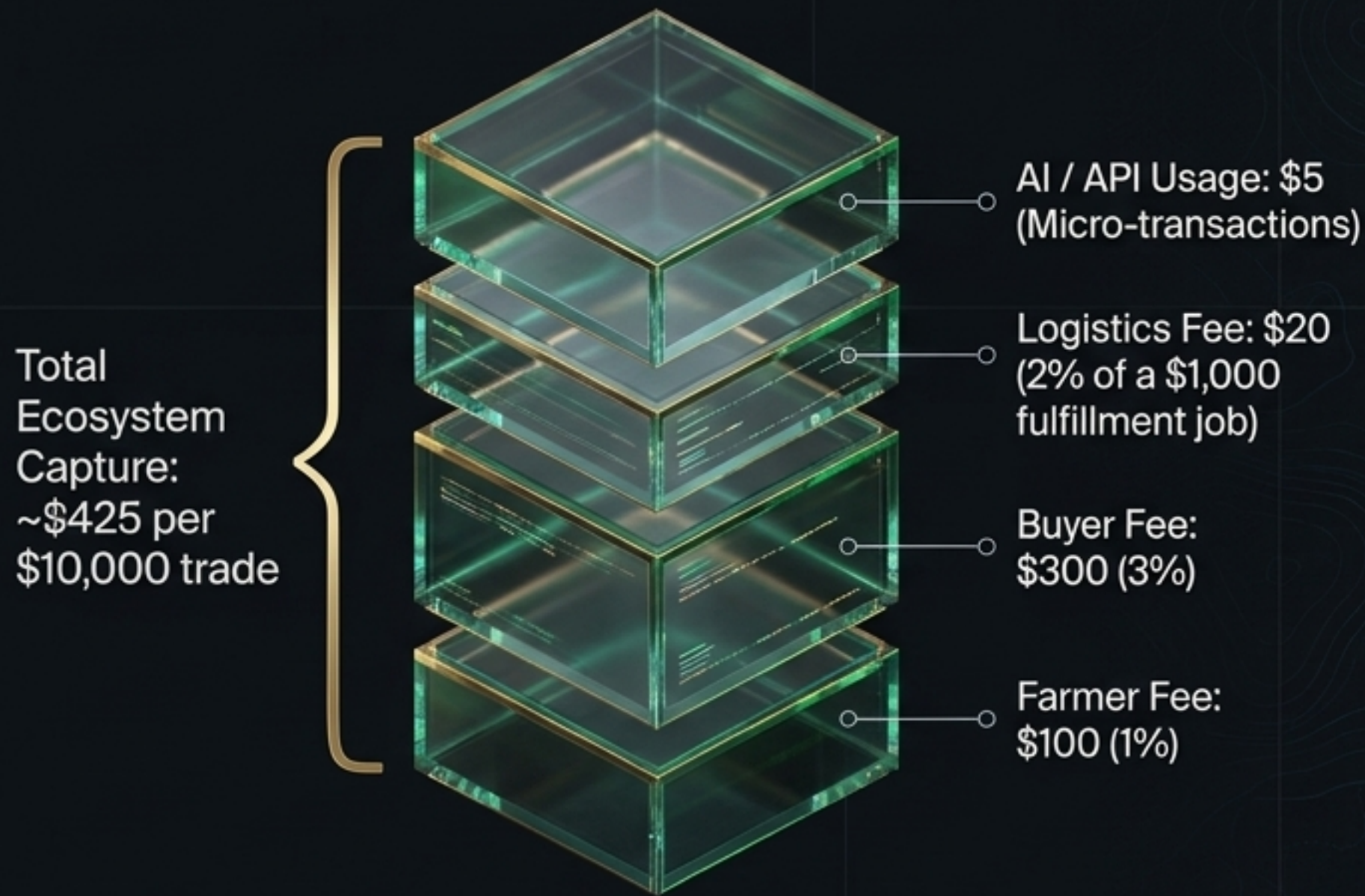
AI triggers commercial events (machinery sales, service bookings).

The 5-Engine Monetization Architecture.



Exponential Revenue Simulation

Base Scenario (1 Deal = \$10,000)



10,000 routine transactions yield **\$4.25M** in net platform transaction revenue—entirely excluding all recurring SaaS MRR, Performance Carry, and B2G Enterprise contracts.

Global Expansion & Strategic Partnerships.

Phase 1: Dominate African agricultural liquidity (Leveraging M-Pesa & MTN Mobile Money).

Phase 2: Expand into Middle Eastern food-security corridors.

Phase 3: Establish a globally interconnected, AI-optimized Ag-Economy.

Join the CONSAI Agro OS Ecosystem.

We are currently onboarding strategic investors, sovereign partners, and enterprise suppliers to aggressively accelerate our liquidity engine.

